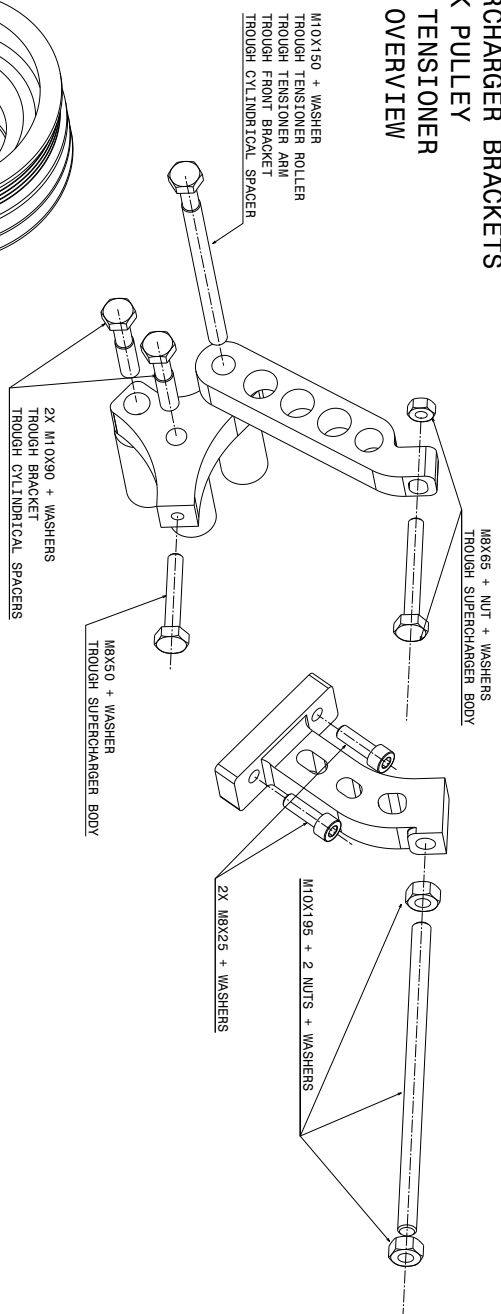


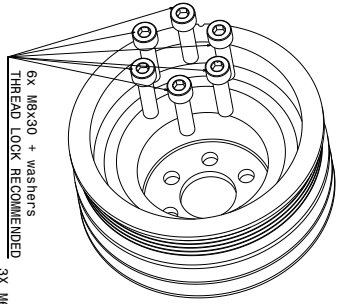
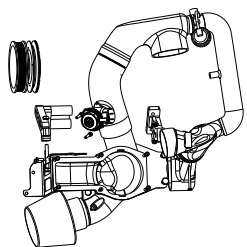
SUPERCHARGER BRACKETS
CRANK PULLEY
BELT TENSIONER
BOLT OVERVIEW



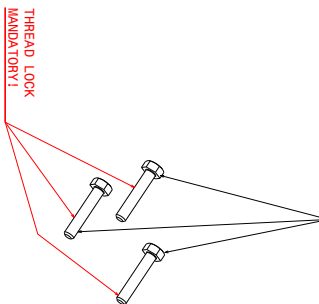
VEGA (V3)
SUPERCHARGER KIT

DESIGNED FOR THE PORSCHE 924
2L NATURALLY ASPIRATED
AND EATON M45 CHARGER FROM MINI COOPER S R53

DESIGNED, BUILT AND TESTED BY:
dipl.ing. CIPRIAN SUCIU
www.the924.com



3X M6X30 + WASHERS
TROUGH BYPASS VALVE
INTO PLASTIC 5NM MAX TORQUE



2X M6X25 + WASHERS + NYLON LOCK NUTS, ALLEN KEY

M6X60 + WASHER
max torque 5Nm
THREAD LOCK MANDATORY

4X M8X20 + WASHERS
TROUGH SUPERCHARGER OUTLET
INSIDE CHARGER OUTLET BOLT <- ENSURE TORQUE, THREAD LOCK MANDATORY

5X M6X25 + WASHERS + NYLON LOCK NUTS
TROUGH AIR METERING HEAD HOUSING

CROSS HEAD SCREW, INTO PLASTIC M6X10
TROUGH AIR METERING HEAD HOUSING

PODfilter
Ø70mmOUTLET
150mmbydiameter
110mmlength

2X M6X12 + WASHERS + NYLON LOCK NUTS

3X M6X15 + WASHERS + NYLON LOCK NUTS
TROUGH HOT START VALVE

AIR FILTER BOX
SUPPORT BRACKETS
VALVES AND TUBES
BOLT OVERVIEW

IMPORTANT NOTE:
CLAMPS ALIGNED WITH METAL REINFORCEMENT RINGS INSIDE THE PLASTIC PIPES
ALL CLAMPS AS TIGHT AS POSSIBLE WITH A HAND HELD MANUAL PHILLIPS SCREWDRIVER